

WORK STATION ACCESSORIES

INDIVIDUAL PANEL SUPPORTS

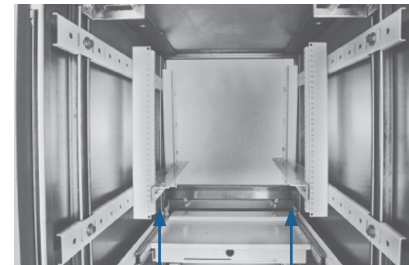
Catalog No.	Notes	Product Code
SCE-FSPS4	Set of 4	P2
SCE-FSPS6	Set of 6	P2
SCE-FSPS8	Set of 8	P2

Individual Panel Supports are available for mounting subpanels. Packaged in sets with all mounting hardware included. Made of heavy gauge steel and plated.



Catalog No.	Height (A)	Width (B)	Depth (C)	Qty Per Kit	Product Code
SCE-SB18	2.00	2.00	15.00	2	C2

Equipment support brackets help support rack mounted equipment during installation. The support mounts between two pair of type (RA) rack mounting angles. Slotted holes are provided to allow adjustment. Made of heavy gauge steel and powder coated white. Mounting hardware is included.



Brackets

Catalog No.	Description	Qty Per Kit	Product Code
SCE-PS3816CN	3/8 - 16 Strut Nut	20	P2
SCE-PS1420CN	1/4 - 20 Strut Nut	20	P2

Designed to allow mounting of additional equipment to side channels. Zinc plated.



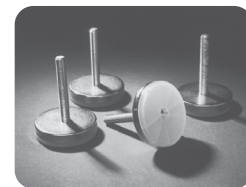
[SCE-PS1420CN](#)



[SCE-PS3816CN](#)

Catalog No.	Thread Size	Height	Qty Per Kit	Product Code
SCE-LPD2	3/8 - 16	2.00	4	P2

Designed to attach to the bottom of the enclosure in the existing threaded holes. Allows for adjustments for uneven floors. Pads are zinc plated with a plastic base. Mounting hardware is included.



WORK STATION ACCESSORIES

BLANK TOP DOOR

Catalog No.	Height (A)	Width (B)	Finish	Product Code
SCE-STWBTD	21.50	25.63	White	C2
SCE-STWSSBTD	21.50	25.63	Stainless Steel	C2
SCE-WSBTD	23.60	23.86	RAL 7035 Gray	C2
SCE-WSSBTD	26.59	23.88	Stainless Steel	C2

Designed to replace the top door when cutouts are desired. Pour in place oil and water resistant gasket. Installed by removing hinge pin. Black quarter turn latches. Made of heavy gauge steel and powder coated. "SS" door is made of Type 304 stainless steel with #4 brushed finish. Mounting hardware is included.



Catalog No.	Height (A)	Width (B)	Depth (C)	Finish	Product Code
SCE-PE22	21.38	8.00	8.00	RAL 7035 Gray	C2
SCE-PE22SS	21.38	8.00	8.00	Stainless Steel	C2

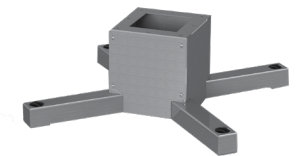
Designed to allow desktop work stations to be floor-mounted. Gasket and hardware provided to attach to work station. Made of heavy gauge steel and powder coated RAL 7035 gray. "SS" pedestal is made of Type 304 stainless steel.



PEDESTAL BASE

Catalog No.	Height (A)	Width (B)	Depth (C)	Finish	Product Code
SCE-24PEBASE	10.00	24.00	24.00	RAL 7035 Gray	C2
SCE-24PEBASESS	10.00	24.00	24.00	Stainless Steel	C2

Designed to mount pedestal to the floor. Made of heavy gauge steel and powder coated RAL 7035 gray. "SS" base is made of Type 304 stainless steel. Mounting hardware is included.



WORK STATION PLINTH BASE

Catalog No.	Height (A)	Width (B)	Depth (C)	Product Code
SCE-P2424WS	4.00	24.25	24.25	P2
SCE-P2432WS	4.00	32.25	24.25	P2
SCE-P2626WS	4.00	26.00	26.00	P2
Stainless Steel				
SCE-P2424SSWS	4.00	24.25	24.25	P2
SCE-P2432SSWS	4.00	32.25	24.25	P2
SCE-P2626SSWS	4.00	26.00	26.00	P2

Designed to install under an enclosure to provide space for cables to enter from below and raise the enclosure up off the floor. Plinth bases are stackable to acquire desired height off the floor. Made of heavy gauge steel and finished with black textured powder coat. "SS" parts are made of type 304 stainless steel with #4 brushed finish.

